



Irongxk

联容公司版权所有。如有变动，恕不事先通知。



请登录我们的网站: [www.Irongxk.com](http://www.Irongxk.com) 厦门联容电控有限公司 2021-V1.0



**NH**

系列刀型触头熔断器

*Series NH fuses with blade contacts*



**NH** 系列刀型触头熔断器主要用于额定电压至交流500V\* 额定电流至1600A的配电系统中作为线路和电缆的过载保护和短路保护。本系列熔断器能与国外符合IEC、DIN标准的同类熔断器完全互换。

**Series NH fuses with blade contacts** are mainly used in distribution net of rate voltage up to 500V a.c. and rated current up to 1600A for the protection of line and cables against all damages from fault currents between overload and rated breaking capacity. This series fuses achieve full exchangeability with similar fuses on domestic and international markets.

## 特色 Features

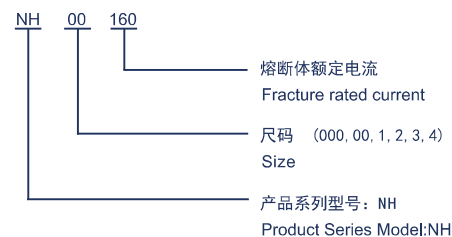
- 特殊设计的变截面尺寸溶体，以及起“M-效应”作用的低熔点合金在位置、形状、和定量上的精确配置，降低了熔断体功率损耗，形成理想的多段保护特性。
- 高强度致密型瓷管具有极好的耐冷热巨变和抗冲击性能。
- 有较高烧结温度的高纯度石英砂作灭弧介质。
- 整体冷锻成型触刀，结构强度和导电性能良好。
- 多种形式的底座可供选择使用。
- The particular design of variable section size of the fuse-element and the accurate configuration of low melting point alloy taking metallurgic effect in respect of the position, shape, and amount have lowered the power dissipation and formed ideal protection characteristics.
- The high strength dense alumina ceramic tubes have excellent performance against abrupt temperature change and resistance to impact.
- High purity quartz sand with comparatively high sintering temperature is used as arc extinguishing medium.
- The integral blade contacts are shaped with cold forging, which has good structure strength and fine electrical conductivity.
- Varies forms of fuse-base are available to meet different needs.

\* 部分尺码的电压至400V, 690V。



## 型号含义

### 型号及含义 Model denomination



## 符合标准

- IEC 60269.2-2013 《低压熔断器 第2部分：专职人员使用的熔断器的补充要求》  
《Low-voltage fuses—Part 2: Supplementary requirements for fuses for use by authorized persons》
- GB/T 13539.2-2015 《低压熔断器 第2部分：专职人员使用的熔断器的补充要求》  
《Low-voltage fuses—Part 2: Supplementary requirements for fuses for use by authorized persons》

## 熔芯-开关配对表

| 尺码  | 额定电压 (V)                | 分断能力 (kA)                                | 额定电流 (A)                                    | 适用开关   |
|-----|-------------------------|--|---|--|
| 000 | DC250<br>AC500<br>AC690 | 100(DC250V)<br>120(AC500V)<br>50(AC690V) | 2、4、6、10、16、<br>20、25、32、40、50<br>63、80、100 | XKQR-63, XKQR-125, XKQR-160<br>QSA-63, QSA-125, XKQG-100 |
| 00  | DC250<br>AC500<br>AC690 | 100(DC250V)<br>120(AC500V)<br>50(AC690V) | 125、160                                     | XKQR-125, XKQR-160<br>QSA-125, QSA-160, XKQG-160         |
| 1   | DC440<br>AC500<br>AC690 | 100(DC440V)<br>120(AC500V)<br>50(AC690V) | 125、160、200、250                             | XKQR-250, XKQR-400<br>XKQG-250, QSA-250                  |
| 2   | DC440<br>AC500<br>AC690 | 100(DC440V)<br>120(AC500V)<br>50(AC690V) | 200、250                                     | XKQR-250, QSA-400,<br>QSA-250, QSA-400, XKQG-400         |
|     |                         |  | 315、355、400                                 | XKQR-400, QSA-400, XKQG-400                              |
| 3   | DC440<br>AC500<br>AC690 | 100(DC440V)<br>120(AC500V)<br>50(AC690V) | 400、500、630                                 | XKQR-630, XKQR-800,<br>QSA-630, QSA-800, XKQG-630        |
|     |                         |  | 800   | XKQR-800, QSA-800  |
| 4   | DC440<br>AC690<br>AC400 | 50(DC440V)<br>50(AC690V)<br>100(AC400V)  | 800、1000                                    | XKQR-1000, XKQR-1250,<br>QSA-1000, QSA-1250, XKQR-1600   |
|     |                         |  | 1250  | XKQR-1250, XKQR-1600, QSA-1250                           |
|     | AC400                   | 100                                      | 1600  | XKQR-1600  |

主要技术指标

Technical data

|                |   |                                       |
|----------------|---|---------------------------------------|
| 产品标准           | Product standard                        | GB/T 13539,IEC 60269                  |
| 额定电压 *         | Rated voltage(V)                        | AC690V/AC500V/AC400V<br>DC250V/DC440V |
| 分断范围和使用类别      | Breaking range and utilization category | gG                                    |
| 额定绝缘电压         | Rated insulating voltage(V)             | AC690                                 |
| 额定分断能力 *       | Rated breaking capacity(kA)             | 120                                   |
| 过电流选择性(In≥16A) | Over-current discrimination(In≥16A)     | 1.6:1                                 |

注：具体视型号产品认证情况，具体参数详见样本P2熔断开关配对表。  
Note: Depending on the type of product certification, Details of the parameters are shown in the sample p 2 fused-core switch pairing table.

熔断体

Fuse-link

| 尺码<br>Size | 额定电流<br>Rated current (A) | 尺码<br>Size | 额定电流<br>Rated current (A) |
|------------|---------------------------|------------|---------------------------|
| 000        | 2                         | 2          | 125                       |
|            | 4                         |            | 160                       |
|            | 6                         |            | 200                       |
|            | 10                        |            | 224                       |
|            | 16                        |            | 250                       |
|            | 20                        |            | 315                       |
|            | 25                        |            | 355                       |
|            | 32                        |            | 400                       |
|            | 40                        | 3          | 315                       |
|            | 50                        |            | 355                       |
|            | 63                        |            | 400                       |
|            | 80                        |            | 425                       |
|            | 100                       |            | 500                       |
|            |                           |            | 630                       |
| 00         | 125                       |            | 800                       |
|            | 160                       |            | 800                       |
| 1          | 80                        | 4          | 1000                      |
|            | 100                       |            | 1250                      |
|            | 125                       |            | 1600                      |
|            | 160                       |            |                           |
|            | 200                       |            |                           |
|            | 224                       |            |                           |
|            | 250                       |            |                           |

熔断器底座

Fuse-base

| 尺码 Size | 极数 Poles  | 额定电流 Rated current (A) | 重量 Weight(Kg) |
|---------|---|------------------------|---------------|
| 00      | 单极 Single Poles                                 | 160                    | 0.23          |
|         | 3极, 并列式 3 - pole in parallel                    |                        | 0.46          |
|         | 3极, 直列式 3 - pole in parallel                    |                        | 1.0           |
| 1       | 单极 Single Poles<br>3极, 并列式 3 - pole in parallel | 250                    | 0.64<br>2.0   |
| 2       | 单极 Single Poles                                 | 400                    | 0.67          |
| 3       | 单极 Single Poles                                 | 800                    | 0.92          |

附件

Accessories for fuse-base

底座附件 Accessories for fuse-base

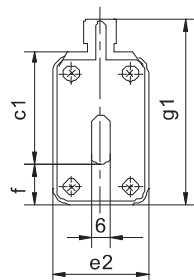
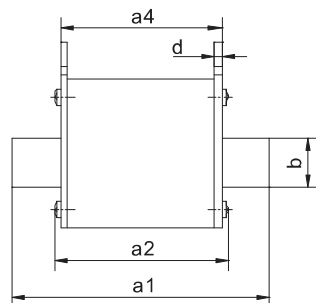
| 尺码<br>Size | 名称<br>Name      | 用途说明<br>Usage notes  |
|------------|-----------------|--|
| 00         | 隔板<br>Clapboard | 用于00号单级底座之间，隔板与底座紧靠安装<br>For size 00 single-pole bases.            |
| 1          | 隔板<br>Clapboard | 用于1号单级底座之间，需结合1号支持件使用<br>For size 1 single-pole base with support. |
| 2          | 隔板<br>Clapboard | 用于2号单级底座之间，需结合2号支持件使用<br>For size 2 single-pole base with support. |
| 3          | 隔板<br>Clapboard | 用于3号单级底座之间，需结合3号支持件使用<br>For size 3 single-pole base with support. |
| 1          | 支持件<br>Support  | 用于支撑极间隔板<br>For support clapboard                                  |
| 2          | 支持件<br>Support  | 用于支撑极间隔板<br>For support clapboard                                  |
| 3          | 支持件<br>Support  | 用于支撑极间隔板<br>For support clapboard                                  |

注：并列式3极底座中的极间隔板属于底座的组成零件  
Note:Clapboardsin the 3-pole bases of side are belonged in the parts of bases.

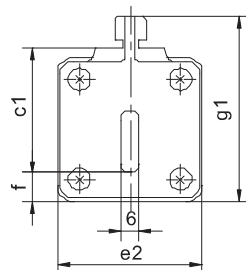
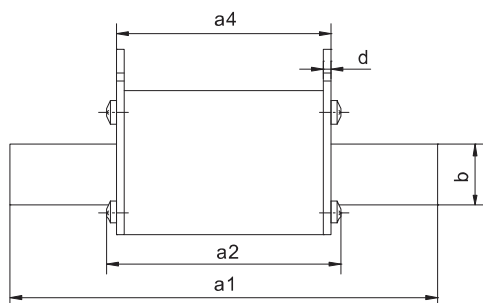
## 尺码000~3熔断体

## Fuse-link size 000~3

尺码000/00熔断体



尺码1~3熔断体



尺码000~3熔断体

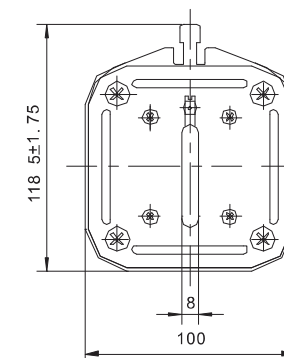
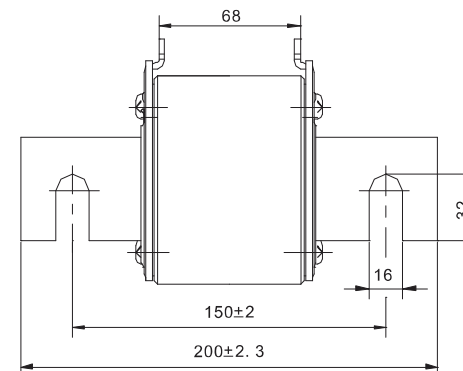
Dimensions of fuse-links and isolating blades size 000~3

| 尺码<br>Size | a1   | a2 | a4 | b  | c1 | d   | e2 | f    | g1 | 额定电流<br>Rated current (A) |
|------------|------|----|----|----|----|-----|----|------|----|---------------------------|
| 000        | 78.5 | 54 | 49 | 15 | 35 | 2   | 21 | 7.5  | 53 | 4~100                     |
| 00         | 78.5 | 54 | 49 | 15 | 35 | 2   | 30 | 12.5 | 58 | 125~160                   |
| 1          | 135  | 74 | 68 | 20 | 40 | 2.5 | 48 | 9    | 59 | 80~250                    |
| 2          | 150  | 74 | 68 | 20 | 48 | 2.5 | 48 | 9    | 67 | 125~250                   |
|            |      |    |    | 25 | 48 |     | 57 | 12.5 | 71 | 315~400                   |
| 3          | 150  | 74 | 68 | 25 | 60 | 2.5 | 57 | 12.5 | 83 | 315~400                   |
|            |      |    |    | 32 | 60 |     | 70 | 15   | 85 | 425~630、800               |

## 尺码4 熔断体

## Fuse-link size 4

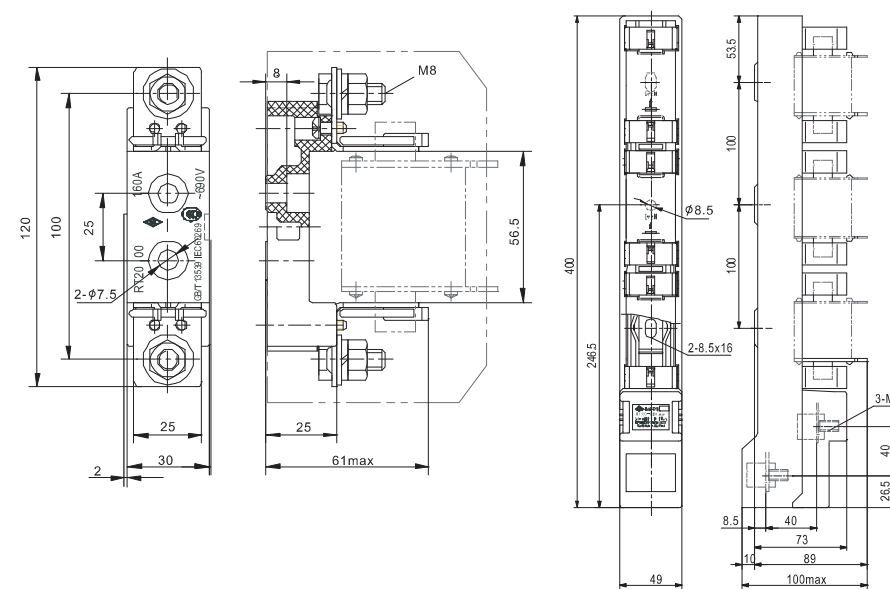
尺码4 熔断体



## 熔断器底座

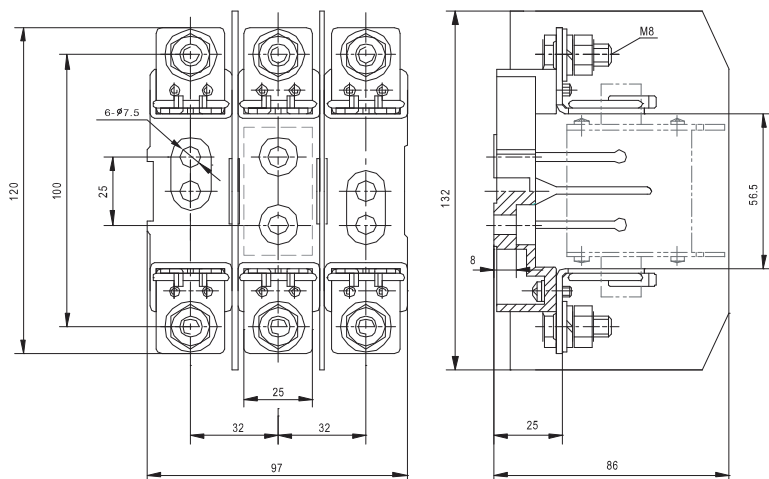
## Fuse-base

## 尺码00 底座 (单极/3极直列式) size 00 Base(single pole/3 in vertical)



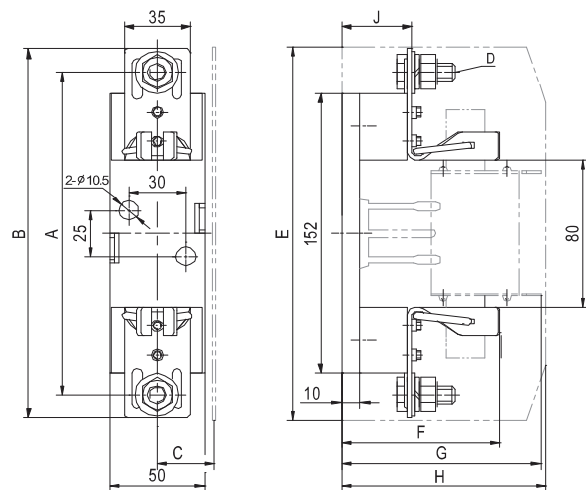
尺码00 底座 (3极并列式)

size 00 Base(3-pole in parallel)



尺码1~3 单极底座

size1~3 Single pole fuse-base



尺码1~3单极底座尺寸

Dimensions of single fuse-base size 1~3

mm

| 尺码 | Size | A   | B   | C  | D   | E   | F    | G     | H   | J    |
|----|------|-----|-----|----|-----|-----|------|-------|-----|------|
| 1  |      | 175 | 200 | 30 | M10 | 203 | 84   | 105   | 108 | 37.5 |
| 2  |      | 200 | 225 | 35 | M10 | 228 | 90   | 113.5 | 117 | 37.5 |
| 3  |      | 210 | 240 | 40 | M12 | 243 | 98.5 | 125.5 | 131 | 40   |

尺码1 底座 (3极并列式)

size 1 Base(3-pole in parallel)

